

Baby Angel Cocoon Instructions

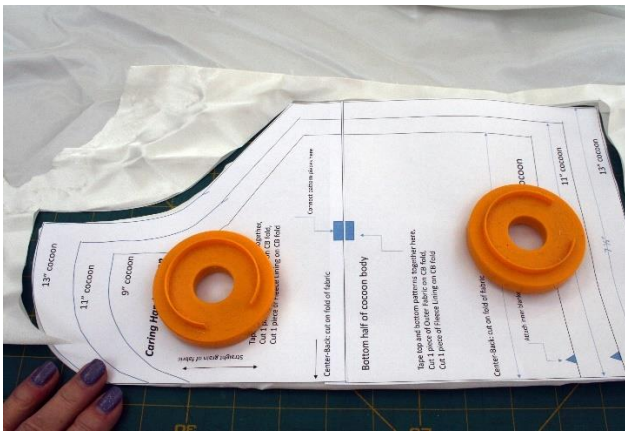


- poly-fleece: 1/2 yard
- lightweight fusible interfacing: 1/4 yard
- 1/8" satin ribbon: 2 yards
- thread and needle, scissors, sewing machine

Cutting out: there are 4 pattern pieces:

- main body of the cocoon: cut (on fold) 1 of dress fabric, 1 of fleece, 1 of interfacing
- inside "blanket": cut (on fold) 1 of fleece
- inside "pillow cover": cut 2 of fleece and 2 of lining fabric
- inside "pillow stuffing": cut 3 or 4 (depending on fabric thickness) of fleece





Cut the main Cocoon Body piece from the wedding dress skirt, and add lace or trim details from the bodice or sleeves. Sometimes you can find a decorative part of the skirt and use that: slide the pattern piece under the fabric to place the motif where it will best show when the cocoon is finished and closed, then fold the fabric and place the pattern piece so that the centre-back is on the fold

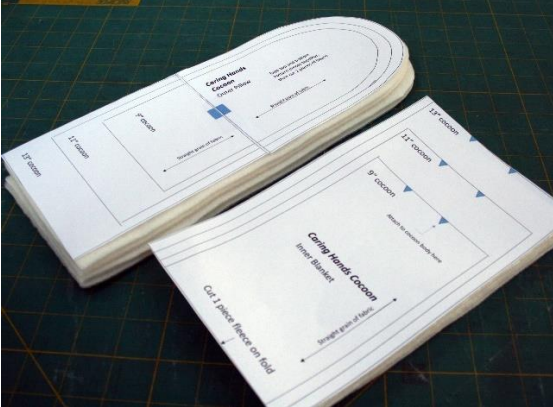


If there is no decorative motif on the skirt fabric, you can un-stitch one from elsewhere on the dress, and applique it to the Cocoon Body outer fabric. The easiest way to un-stitch is to use a "Third Hand" clamp on your cutting table, so that you can use one hand for holding the fabric taut and the other hand for your seam-ripper





Apply the decor to the cocoon body using a small zig-zag stitch, being careful to avoid any pearls or sequins (alternatively, you can use Fabri-Tac liquid adhesive)

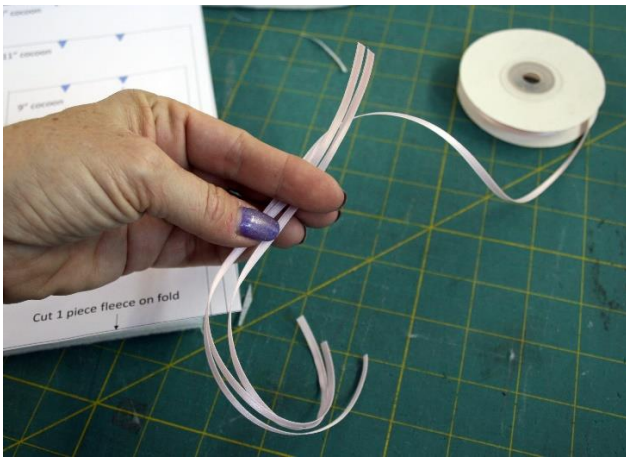


After cutting out, interfacing, and decorating the Cocoon Body, unfold it to cut a matching piece of poly-fleece, and then cut 3 or 4 pieces of Pillow Stuffing also from the fleece:

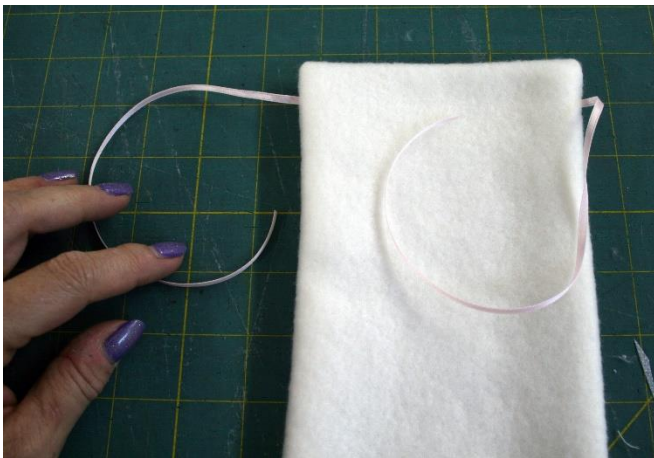
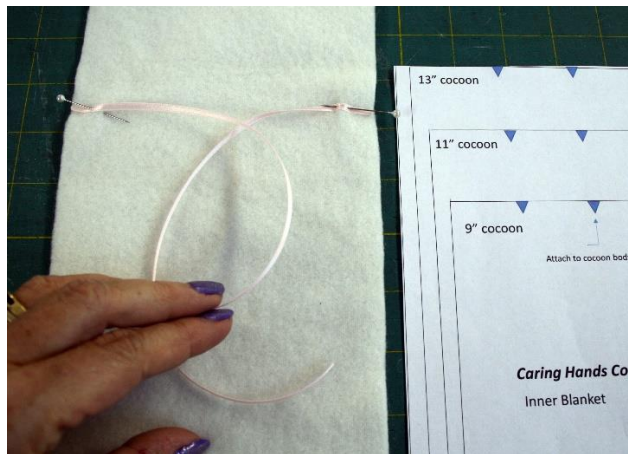


Also in fleece you will cut: 1 piece (on fabric fold) for the Blanket, and 2 pieces for the Pillow Cover. Cut 2 more pieces of the Pillow Cover, this time from a smooth fabric which will make it easier to stuff later (I used fabric from the dress lining):





Next cut 2 yards of 1/8" satin ribbon into 8 pieces at 9" each, and heat-seal the ends to prevent unraveling, using a candle or lighter



Now to sew them all together Blanket: pin 2 ribbon ends to the inside of the blanket, about 1/2" from the fold, then fold the fabric down over the ribbon, right sides are together, so that the ribbons are enclosed, now stitch along the 2 long edges with a 1/4" seam (leaving the bottom open), turn inside-out





Cocoon Body: fold the dress-fabric piece in half along centre-back, right sides together, and stitch the "hood" closed with a 1/4" seam. Do the same for the fleece Cocoon Body lining. Turn both pieces inside-out, and press lightly at low-temperature



Pin the Blanket to the right side of the fleece Cocoon Body along the bottom edge, centering the blanket, then stitch together with a 1/4" seam





Pin 2 ribbons to the outside of the decorated Cocoon Body piece, near upper and lower edges (these will tie the cocoon closed when finished):

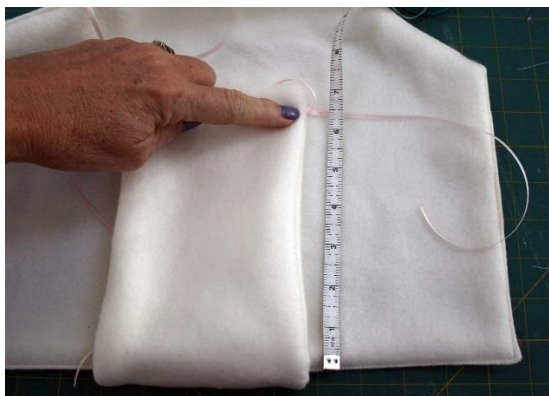


Pin the Cocoon Body fleece lining to the Cocoon Body outer piece, right sides together, enclosing the ribbon ties and the blanket. Stitch around the edge with a 1/4" seam allowance, starting and stopping at the edges of the Inner Blanket, removing pins as you stitch. Trim seam allowance and clip off corners:



Flip inside out: sometimes a chop-stick helps to get the corners pushed out completely. Press edges lightly at cool temperature. Tuck in the seam allowance where the Inner Blanket is attached, pin down, and edge-stitch all around perimeter of cocoon:





Hand-stitch the rest of the ribbon ties. Inside, fold up the blanket and mark the spots halfway up the height of the cocoon (4 1/2" up for 9" cocoon, 5 1/2" up for 11" cocoon, etc), stitch ties onto cocoon body fleece at each side of the blanket



Outside, fold the cocoon closed and pin the last 2 ribbons to the outside cocoon body, matching top and bottom placement of the previous ribbons. Hand-stitch the ribbons in place



Last step is to make the Pillow Pillow Cover: pin together, with 2 layers of fleece inside and 2 layers of satin outside. Stitch around outer edge with a 1/4" seam allowance, leaving bottom straight edge open. Flip inside out (satin will now be on the inside, which will make stuffing easier)





Pillow Stuffing: Pin together all of the layers, machine baste, and slip into Pillow Cover (a chopstick makes this easier!), hand slip-stitch closed:



Now put it all together. Place Pillow inside Cocoon, fold up the Blanket, tie little bows:



Close up Cocoon sides and tie the last bows, and you are finished

